



WIMBLEDON 2021

LONDON, ENGLAND

JUNE 28th – JULY 11th, 2021

ONPOINT
EVENTS



The Power of Unforgettable Experiences!

On Point Events continues to be a recognized industry leader in providing distinctive travel experiences to the world's most sought-after sports and entertainment events.

Since 2004, we have been providing discerning travelers with an exceptional experience at all their favorite events world-wide. To accomplish this, we make a significant investment years in advance of the events which includes visiting the destinations, inspecting the finest hotels, establishing the right local partnerships, and exploring everything the destination has to offer from restaurants to the most unique tours, all to establish an exceptional experience for our clients.

The result is a completely customized experience using distinctive accommodations, premium tickets to the events of your choice, private transportation, bespoke tours and excursions, pre-trip planning, concierge services, and more. Our team of Experience Specialists take a consultative approach to personalize and enhance your trip so you can relax and indulge yourself in the special moments that will turn into lasting memories.

Whether you are an avid fan or a company seeking to entertain and reward clients and employees, our extensive sports and entertainment travel experiences, coupled with our high-touch and personalized approach to service, enable us to deliver the "Wow Factor" at every event.

Official Preferred Partner of:



ONPOINT
EVENTS



Welcome to Wimbledon

With a rich history of 142 years of play, Wimbledon is one of the most prestigious Grand Slam events in the world. Wimbledon 2020 will guarantee memorable moments and inspiring levels of athleticism. Secure your seats in Centre Court and experience the magic of each match.

With just one call to our Experience Specialists, you will get your front row seats to sports history. Benefit from our years of research, preparation, and expertise to ensure you get the most memorable sports travel experience in London.

Official Preferred Partner of:



ONPOINT
EVENTS

Your Customized Travel Experiences May Include:



VIP Airport Meet & Greet / Baggage Handling Service



Private Roundtrip Airport Transportation



Standard Deluxe or Luxury Hotel Accommodations



Daily Full Breakfast at the Hotel



Reserved Tickets to Event



Optional: Private Event Transfers



Optional: Private Full-Day Tour



Special Commemorative Welcome Pack & Travel Essentials



Access to Onsite Hosts & Concierge Service



Optional: Pre/Post Trip Extensions



Customized Travel Itinerary & Informational Packet

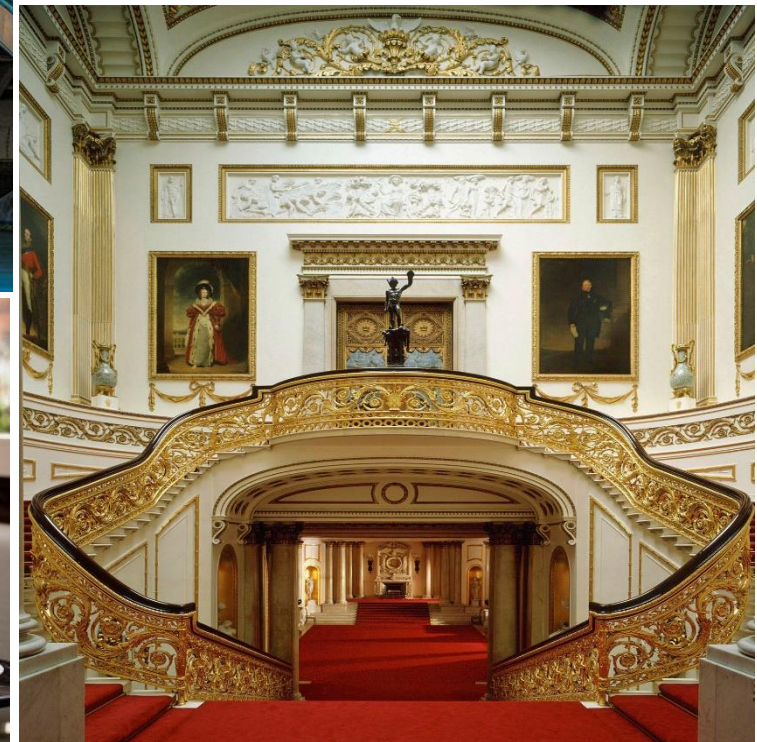


Pre-Trip Planning Consultation



Additional Experiences

- Access to VIP parties and events
- Private half-day/full-day city tours and excursions
- Private transportation (sedan, SUV, limousine)
- Airfare (commercial/private)



Official Preferred Partner of:



ONPOINT
EVENTS

Reserved Seating

The only tickets legally allowed to be resold at Wimbledon are debenture tickets (purple section), which offer fantastic “club level” viewing at the same level of the royal box. These seats for Centre Court are in the 200 gangways (sections) and the first few rows of the 300 gangways.

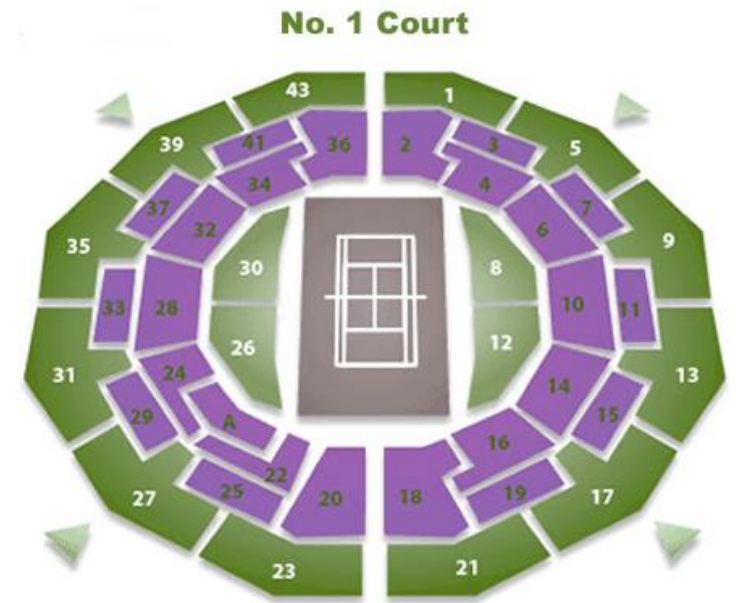
Your debenture tickets are valid for the whole day’s play on Centre Court and provide full access to the unreserved seating on the outside courts of the All England Lawn Tennis ground.

Court 1 debenture tickets only provide access to sessions on Court 1 and the unreserved seating on the outside courts.

All debenture tickets provide you with daily access to the debenture holder’s exclusive lounges which feature private restaurants, bars, bathrooms, and more.

“We got exactly what we asked for – GREAT seats! We felt like royalty and had an amazing time”.

G. Goldstein – Wimbledon



Debenture seating



Wimbledon Schedule

Date	Competition
Monday, June 28th	Men's and Ladies' Singles 1 st Round
Tuesday, June 29 th	Men's and Ladies' Singles 1 st Round
Wednesday, June 30 th	Men's and Ladies' Singles 2 nd Round
Thursday, July 1 st	Men's and Ladies' Singles 2 nd Round
Friday, July 2 nd	Men's and Ladies' Singles 3 rd Round
Saturday, July 3 rd	Men's and Ladies' Singles 3 rd Round
Sunday, July 4 th	No Play
Monday, July 5 th	Men's and Ladies' Singles 4 th Round
Tuesday, July 6 th	Ladies' Singles Quarter-Finals
Wednesday, July 7 th	Men's Singles Quarter- Finals
Thursday, July 8 th	Ladies' Singles Semi-Finals
Friday, July 9 th	Men's Singles Semi- Finals
Saturday, July 10 th	Ladies' Singles Final Men's Doubles Final Ladies' Doubles Final
Sunday, July 11 th	Men's Singles Final Mixed Doubles Final

*Please note that the schedule is subject to change.



Hotel Packages	Room Type	Centre Court Packages from	Court No. 1 Packages from
DoubleTree by Hilton- Chelsea	Standard	\$3,475*	\$2,825*
The Langham	Superior	\$4,050*	\$3,400*
The Dorchester	Superior	Call for pricing	Call for pricing
Mandarin Oriental Hyde Park	Superior	Call for pricing	Call for pricing
Four Seasons at Park Lane	Deluxe	\$5,150*	\$4,450*
Four Seasons at Park Lane	Suite	Call for pricing	Call for pricing

Program Pricing

- * All rates are listed per person in USD and are based on double occupancy.
- * Single occupancy rate is available. Triple or quad occupancy may be available and would incur additional occupancy charges.
- * Rates include airport meet & greet, private roundtrip airport transfers, 2-night hotel stay, reserved Debenture tickets and On-Site Hospitality (three course lunch, afternoon tea and complimentary bar) for one day. Additional event tickets can be purchased separately.
- * Availability and pricing subject to change prior to booking.

Official Preferred Partner of:



ONPOINT
EVENTS



Four Season Park Lane

Located in the heart of London's Mayfair neighborhood, this property is a splendid blend of British sophistication and a sleek, modern design. Take in views of Hyde Park from the glass-walled rooftop spa and lounge, enjoy a cup of afternoon tea, or stroll through one of the three nearby royal parks. With the famous Amarantos restaurant on site, you can grab cocktails and dinner in the conservatory when you're done at the courts.

- AA Lifetime Achievement Award 2018-19
- TripAdvisor Certificate of Excellence
- Convenient to Harrods and Harvey Nichols, London's premier shopping destinations

Official Preferred Partner of:



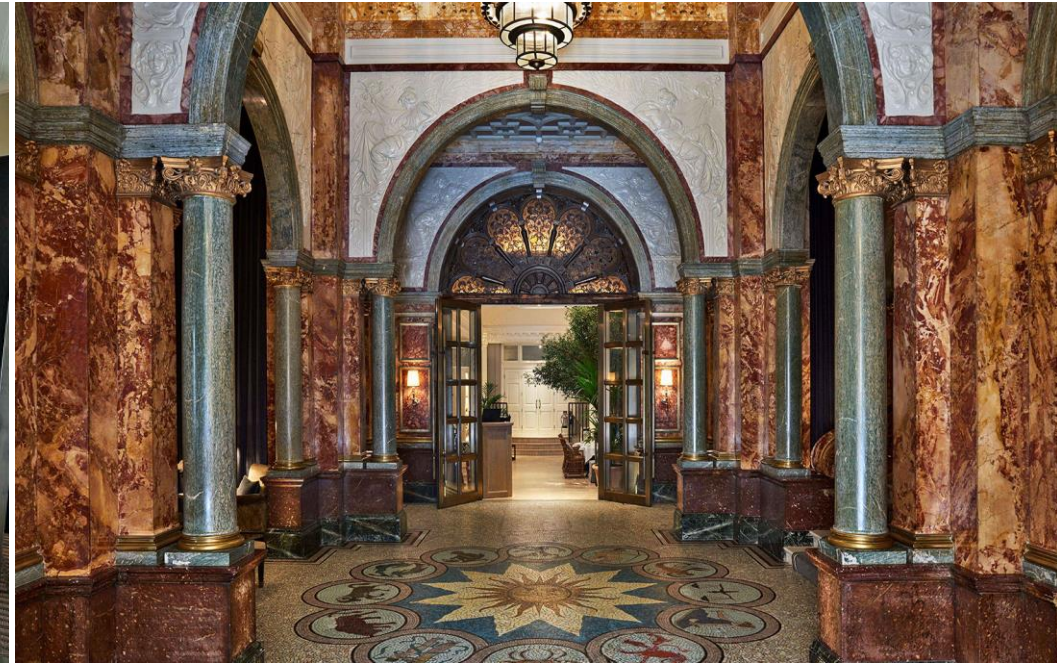
ONPOINT
EVENTS



Mandarin Oriental Hyde Park

Sitting between glorious Royal Parkland and the buzz of central Knightsbridge, Mandarin Oriental Hyde Park, London is re-imagined and re-invented, offering the essence of timeless heritage coupled with contemporary flair and impeccable service. Each room has its own unique layout with a bespoke furniture and custom-made Onyx chandeliers. Volakas marble bathrooms have either a walk-in shower or bath with an in-built shower.

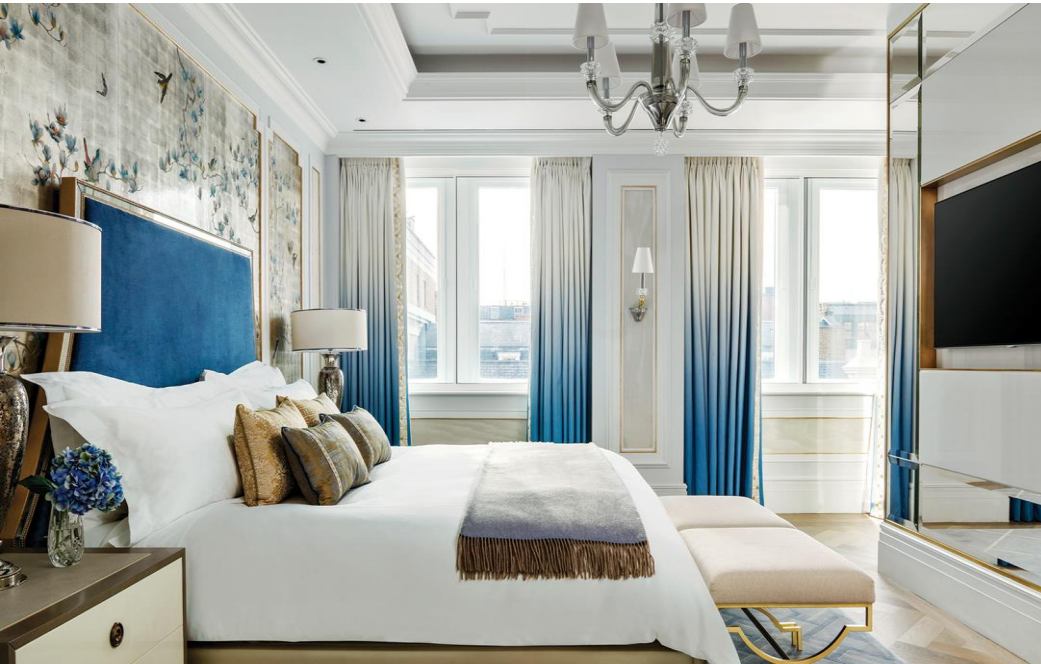
- Condé Nast Traveller – Best UK Business Hotel
- TripAdvisor Certificate of Excellence
- Overlooking Hyde Park, less than 1 minute from the Victoria and Albert Museum



The Dorchester

Overlooking Hyde Park, this 1930s luxury landmark hotel in Mayfair is less than a mile from New Bond Street's designer shops and tube station. Elegant, individually designed rooms feature marble bathrooms with soaking tubs, and antique furniture, plus Bang & Olufsen TVs and free Wi-Fi. Suites offer extra living space; some add butler and/or limousine services, 4-poster beds, and city or park views.

- TripAdvisor Certificate of Excellence
- Luxury Travel Advisor Awards of Excellence
- 3 Michelin Star Restaurant at the Alain Ducasse



The Langham

With a history of delighting guests and providing personalized service since 1865, The Langham, London is truly a London icon. With the recent addition of deluxe suites, British tavern, The Wigmore and a new spa, Chuan Body + Soul, the reimagining of Europe’s first Grand Hotel is ever evolving. 380 fully refurbished and elegantly appointed rooms and suites that evoke a welcoming, residential ambience, while offering the conveniences of today.

- TripAdvisor Certificate of Excellence
- 2020 Conde Nast Traveller Gold List
- World’s Best Bar, Drinks International Magazine



DoubleTree by Hilton- Chelsea

Boasting a fantastic location at the acclaimed Imperial Wharf, DoubleTree by Hilton Hotel London - Chelsea is an ideal base in the heart of the prestigious area of Chelsea. From our hotel, guests can explore the eclectic cafes and chic boutiques of Kings Road and Chelsea Harbour. The hotel is located a one minute walk from Imperial Wharf station on the London Overground.

- Major attractions such as the Houses of Parliament, and Westminster Abby are minutes away.
- Located in the charming neighborhood of Chelsea
- On-site dining

VIP Hospitality



Beautifully landscaped gardens, subtle floral touchpoints, and British-inspired four course à la carte food and drinks menus personify the theme of tennis in an English garden, all making for an unforgettable experience. Conveniently located within the grounds, our VIP Hospitality also offers you and your guests a stunning outdoor terrace with views of Centre Court. And once play commences on Centre Court, you have just a short stroll to take your allocated courtside seats.

Hospitality Includes:

- Four-course à la carte menu using premium, British sourced ingredients,
- Premium wine selection paired to menu, Champagne (including rosé) and bespoke cocktails
- complimentary bar open throughout the day so you can re-stock any time
- Exclusive outdoor terrace with views towards Centre Court

Additional Experiences



The Courtside Restaurant

The Courtside restaurant is the premier waiter-served restaurant offering debenture holders a wide range of hot and cold three-course lunches and traditional Wimbledon afternoon tea. The wines on offer have been specially selected by our Official Wine Supplier to enhance your dining experience. The restaurant features showcases displaying memorable objects and images from Wimbledon history. Reservations can be made for a maximum of six persons per table for lunch only



The Renshaw Restaurant

The Renshaw restaurant will be available all day for the exclusive use of debenture holders and is situated directly below the No.1 Court debenture holders' lounge. This restaurant offers debenture holders a reserved table for the day with waiter-served three-course lunch and afternoon tea, a welcome glass of Pimm's or Champagne on arrival, wines with your meal and a complimentary bar throughout the day for an all-inclusive price. Reservations can be made for a maximum of six persons per table

Additional Experiences



National Gallery Tour

London's classical art gallery and one of the top art galleries in the world. When the National Gallery was founded in 1824, it displayed just 38 paintings. Today, it's home to over 2300 works of art, from medieval paintings to world-famous Impressionist works. You will see the likes of Leonardo, Michelangelo, Correggio, and standout works from Rembrandt, Van Gough, and Monet.



Nightlife Experience in Soho

Soho is considered the heart of London nightlife. This colorful, bohemian center of London has many things to offer; the legendary jazz club that's hosted stars like Miles Davis, the famous speakeasy where Charles de Gaulle drank during WWII, and underground experimental cocktail clubs. If you are into dancing, check out the legendary Marquee Club where artists such as David Bowie, the Rolling Stones, and U2 have performed.

Additional Experiences



Champagne and Canapes on the London Eye

Relax and enjoy an extra special look at London's skyline in your very own private capsule. Sip chilled champagnes and nibble on canapes in your cozy cabin as you experience unforgettable views from Europe's tallest observation wheel. Built in 2000 in honor of the coming millennium, the London Eye has quickly become one of London's best-loved attractions.

Tour the Tate Modern Museum

This powerhouse of contemporary art is Britain's most visited and spectacular gallery. Once a power station on the Thames, this magnificent venue showcases minimalism, surrealism, and post-war abstraction artwork by Picasso, Anthony Gormley, Salvador Dalí, and Andy Warhol.

Additional Experiences



Iconic Landmark Tour

Be awed by Westminster Abbey, bounce around Buckingham Palace, wander through Windsor Castle, and climb to the top of the Tower Bridge. London is filled with iconic and majestic attractions of historical and cultural importance. A private day-tour offers you the ability to experience the city at your own pace. Sightsee, then stop for a unique afternoon tea experience at Sketch in Mayfair.

Mingle Through the Food Markets

London is filled with local food markets. The oldest and most famous of London's food markets, dating back to the 13th century, is the Borough Market. London's top chefs shop for fresh ingredients at Borough Market's specialty food shops and stalls, while crowds of visitors are drawn to the diverse street food. You can find almost anything here – from fresh seafood and rare French cheeses to Croatian sausage, freshly baked cakes, ostrich burgers, and every spice imaginable. Many stalls offer free samples of their wares. The street food vendors are a diverse bunch, with Indian curry vying for popularity with Lebanese wraps and European cake stalls.

3 Perfect Nights in London



Day 1 (Arrival)

- Airport meet and greet upon arrival to London.
- Private transfer to your hotel.
- Meet with your On Point Events host to review your personalized itinerary, ask questions, and make any requests.
- Get ready to experience the artistic side of London with a half-day private gallery and museum tour.
- For dinner, make your way to the famous Harrod's Food Hall for a progressive, casual dining experience. Sip and stroll your way through the variety of culinary stands and spirit stations.

Day 2

- Enjoy breakfast at your hotel.
- Start your day with a morning mimosa in your private cabin on the London Eye.
- Embark on a full-day private tour through the iconic cultural site in London with a stop for afternoon tea and treats at one of the renowned London locations.
- In the evening, explore Soho and its many unique bars, restaurants, and lounges.

Day 3

- Enjoy breakfast at your hotel.
- Match day! Take your private transportation to Wimbledon. Tour the Tennis Museum and grounds. Then, make your way to your Centre Court seats and get ready for the games to begin!
- Return to the hotel to freshen up.
- Secure a spot at The Ivy for dinner. See and be seen while you dine next to London elite and global celebrities.

Day 4 (Departure)

- Enjoy breakfast at your hotel.
- Private transfer to airport.
- Return home.

Sample three-night itinerary – per person investment starting at \$3,995.



Contact us today!

Let our Experience Specialists assist you in putting together the perfect trip to Wimbledon 2020

Phone: +1-713-227-8888

Email: info@onpointevents.com

www.OnPointEvents.com